

### When to use Nasaleze Allergy Blocker

Take Nasaleze Allergy Blocker before symptoms start.

Nasaleze Allergy Blocker is a preventative treatment in the fight against hay fever and allergies. Nasaleze Allergy Blocker should be used before coming into contact with allergens to prevent them from landing on the nasal membrane and starting the allergic response. Nasaleze Allergy Blocker is clinically proven to work effectively in mild to moderate allergic rhinitis sufferers.

Unlike medicines that help relieve allergy symptoms, Nasaleze Allergy Blocker works preventatively to stop an allergic reaction before symptoms start.

If an allergic response has already started before taking Nasaleze Allergy Blocker, allow some time (about 30 minutes) for the immediate symptoms to subside, blow your nose and then apply Nasaleze Allergy Blocker.

If concurrent use of another nasal spray is required, Nasaleze Allergy Blocker should be re-applied afterwards so that the barrier created is not disturbed.

Nasaleze Allergy Blocker can be used in addition to medicines, as part of a combination therapy strategy in the fight against hay fever and allergies.

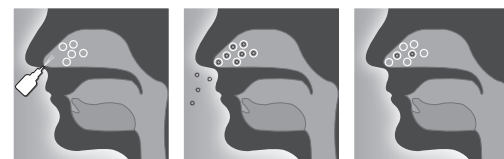
### Who can use Nasaleze Allergy Blocker?

- Nasaleze Allergy Blocker is suitable for adults, athletes, pregnant and breast-feeding women and children from 18 months.
- Nasaleze Allergy Blocker does not contain any drugs or medicines.
- Nasaleze Allergy Blocker has a good safety profile.
- Nasaleze Allergy Blocker is non-drowsy.

### How does Nasaleze Allergy Blocker work?

Nasaleze Allergy Blocker is a powder nasal spray. The powder turns to a gel in the nose which creates a barrier to shield and protect from airborne allergens.

Nasaleze Allergy Blocker protects the nasal membrane against airborne allergens, which is where the allergic response begins. By protecting the nasal membrane from airborne allergens, the degranulation of the mast cells and subsequent release of IGE and histamine is avoided – which is in turn preventing the unpleasant usual symptoms of hay fever and allergies.



The Nasaleze Allergy Blocker treatment action has been proven in over 46 clinical studies on more than 2,000 patients, published in leading journals, has won awards, has been prescribed by Health Care Professionals all over the world and has been featured formally in National Allergy Treatment Guidelines.

### Ingredients

- HPMC 97%
- Strawberry powder 3%

Suitable for vegans

**Manufacturer:**  
Nasaleze Ltd, Unit 3, Woodside House, Ballafletcher Business Park, Douglas, IM4 4QE, Isle of Man, UK

**UK Responsible Person:**  
Atlantic Bridge, 19 Willowside, Woodley, Berkshire, RG5 4HJ, UK

**European Authorised Representative:**  
Acorn Regulatory Consultancy Services Ltd, Knockmorris, Cahir, Co. Tipperary, E21 R766, Ireland

**Importer:**  
Nasaleze International Ltd, Nunery Mills, Old Castletown Road, Douglas, IM2 1QA, Isle of Man, UK

Text revised 11/22 by Nasaleze Group  
NASA-CHILD 11/22

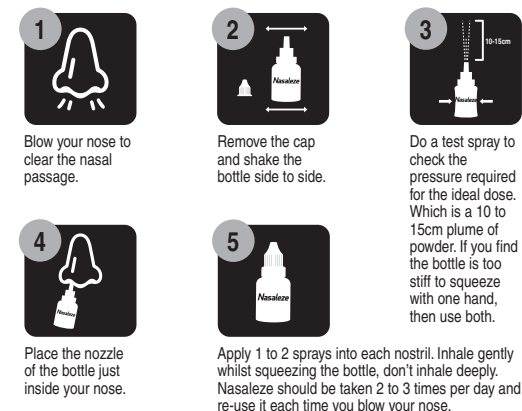
Symbols explained				Patient information website
UK CA	UK Conformity Assessed	Single Patient Use	Importer	Caution
CE	CE Marking of Conformity	Use-by Date	Manufacturer	MD Medical Device
LOT	Batch Code	European Authorised Representative	Consult instructions for use	Keep Dry

### How to use Nasaleze Allergy Blocker

To defend against hay fever and allergies, Nasaleze Allergy Blocker needs to be applied 2 to 3 times per day to maintain an effective barrier. Nasaleze Allergy Blocker has been proven to be strongly resistant to pollen diffusion for up to 6 hours\* per application. \*[Diethart/Emberlin Invitro study]

The strength of the pollen count, proximity of the allergen and severity of the patients' allergies all have an effect on how frequently Nasaleze Allergy Blocker should be taken.

**Remember – take Nasaleze Allergy Blocker before your symptoms start**



A supervising adult can help apply this product using the above steps.



Scan for video instructions on how to use Nasaleze

### If Nasaleze Allergy Blocker is not adequately relieving your symptoms...

- Consult your physician about what medication you could take to supplement your Nasaleze Allergy Blocker in the fight against hay fever and allergies.
- If you have not taken this product before the allergic reaction, wait for your allergic response to subside (about 30 minutes) then try again.
- Read the above guidance carefully and try Nasaleze Allergy Blocker using the above 5 steps.



For more information visit:  
[www.nasaleze.com](http://www.nasaleze.com)



### How to store Nasaleze Allergy Blocker

- Keep out of reach of young children.
- Keep dry
- Do not rinse the bottle with water or other liquid as this may block the bottle.
- Do not use if tamper evident seal is broken.
- Always replace the cap.
- Store at room temperature, or between 5°C and 30°C
- Once opened use within 6 months.
- Do not refrigerate or freeze.



### Contraindications

- Not suitable for children under 18 months.
- Do not use this product if you are sensitive to cellulose and/or strawberry.
- Avoid contact with eyes.
- Avoid contact with open wounds.
- If powder gets into your eye, rinse with water.
- To avoid contamination do not use this product for more than one person.
- During first use, you may experience a tingling or burning sensation in the nose or light sneezing. This is a transient sensation that will go away as you become used to taking Nasaleze Allergy Blocker.
- You may also feel some form of irritation, especially if your nasal membranes are already inflamed or irritated. This will subside quickly.
- Some individuals can feel a slight sensation of a blocked nose, this is normal and is the feel of the barrier created by Nasaleze Allergy Blocker. In case of experiencing more than a slight sensation of blocked nose it is possible the product is being overused.
- If you experience serious discomfort after application of Nasaleze Allergy Blocker consult your physician.
- If concurrent use of another nasal spray is required, Nasaleze Allergy Blocker should be re-applied afterwards so that the barrier created is not disturbed.
- Very few cases of allergic reactions to this product have been reported. Minor reports received have been blocked nose, runny nose, sneezing, sore throat. If you experience reactions more severe than this then use of the product should be discontinued immediately and if symptoms persist, consult your physician. Contact the manufacturer and competent authority.
- In extremely rare cases this product can cause a minor nosebleed.
- Do not use for more than 30 days continuously.